

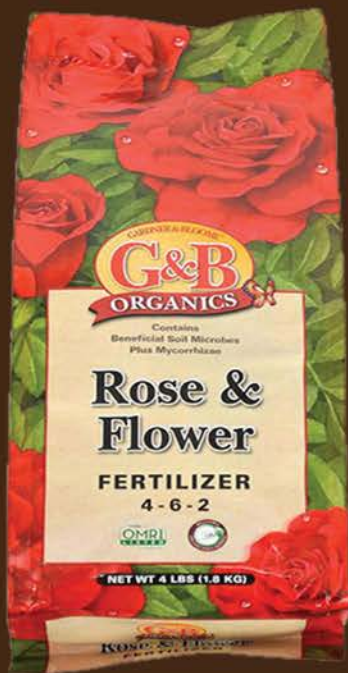
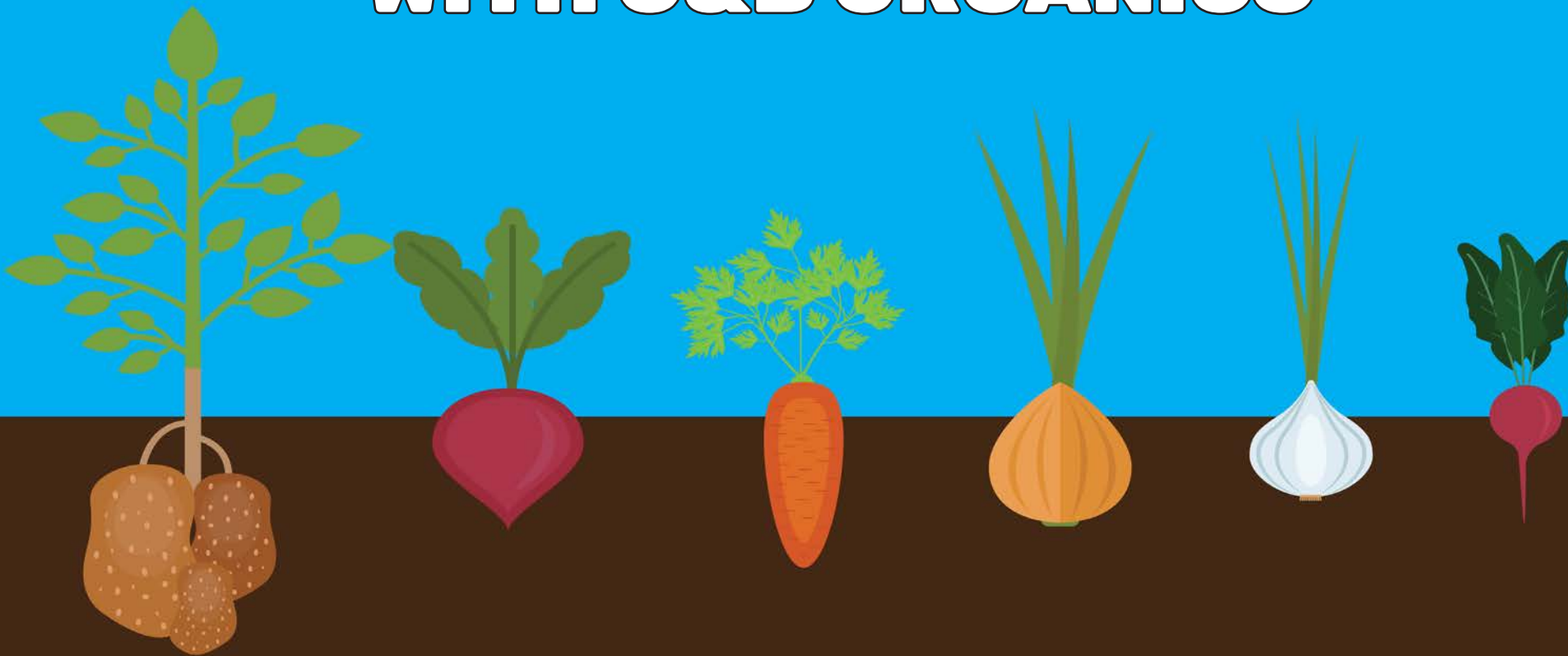


# GOODMAN BUILDING SUPPLY

**MARCH/APRIL 2025**

Prices good from March 1st-April 30th, 2025

## Sow, Grow, and Save WITH G&B ORGANICS



Organic Rose & Flower Fertilizer  
4lb.  
SKU# 830130



Natural Organic All Purpose Fertilizer  
4lb.  
SKU# 830120



Natural & Organic Tomato & Vegetable Fertilizer  
4lb.  
SKU# 830203

**\$8<sup>79</sup>**

Reg. \$10<sup>99</sup>



# GOODMAN BUILDING SUPPLY

**MARCH/APRIL 2025**

Prices good from March 1st-April 30th, 2025

## GARDEN



**G&B ORGANICS**  
Palm, Cactus, & Citrus  
1cu.  
SKU# 830213  
**\$8<sup>79</sup>**  
Reg. \$10<sup>99</sup>



**G&B ORGANICS**  
Bloom Potting Soil  
1cu.ft.  
SKU# 830172  
**\$7<sup>99</sup>**  
Reg. \$9<sup>99</sup>



**G&B ORGANICS**  
Raised Bed & Potting Soil  
2cu.ft.  
SKU# 830215  
**\$12<sup>79</sup>**  
Reg. \$15<sup>99</sup>



**G&B ORGANICS**  
Rose & Flower Planting Mix  
1.5 cu.ft.  
SKU# 830194  
**\$9<sup>59</sup>**  
Reg. \$11<sup>99</sup>



**G&B ORGANICS**  
Harvest Supreme  
2 cu.ft.  
SKU# 830192  
**\$11<sup>99</sup>**  
Reg. \$14<sup>99</sup>



**G&B ORGANICS**  
Acid Planting Mix  
2 cu.ft.  
SKU# 830196  
**\$11<sup>99</sup>**  
Reg. \$14<sup>99</sup>



**G&B ORGANICS**  
Organic Planting Mix  
2 cu.ft.  
SKU# 830176  
**\$10<sup>39</sup>**  
Reg. \$12<sup>99</sup>



**G&B ORGANICS**  
Potting Soil  
2 cu.ft.  
SKU# 830170  
**\$13<sup>59</sup>**  
Reg. \$16<sup>99</sup>



**G&B ORGANICS**  
Natural & Organic  
Fruit Tree Fertilizer  
4lb.  
SKU# 830129  
**\$9<sup>59</sup>**  
Reg. \$11<sup>99</sup>



**G&B ORGANICS**  
Natural & Organic  
Rhododendron Fertilizer  
4lb.  
SKU# 830124  
**\$9<sup>59</sup>**  
Reg. \$11<sup>99</sup>



**HERB**  
Plants  
3.5 inch  
SKU# 895635  
**\$2<sup>99</sup>**  
Reg. \$3<sup>69</sup>



# GOODMAN BUILDING SUPPLY

**MARCH/APRIL 2025**

Prices good from March 1st-April 30th, 2025

## GARDEN CONTINUED



### SPRAY ROSES

*Red or White*  
SKU# 896221

**\$19<sup>99</sup>**

Reg. **\$31<sup>99</sup>**



### PACIFIC HOME & GARDEN

Talavera Planters  
*Assorted Styles*  
SKU# 843560-94

**\$11<sup>19</sup>-\$115<sup>19</sup>**

Reg. **\$13<sup>99</sup>-\$143<sup>99</sup>**

**WHILE SUPPLIES LAST**



# GOODMAN BUILDING SUPPLY

**MARCH/APRIL 2025**

Prices good from March 1st-April 30th, 2025

## PAINT



# 20% OFF

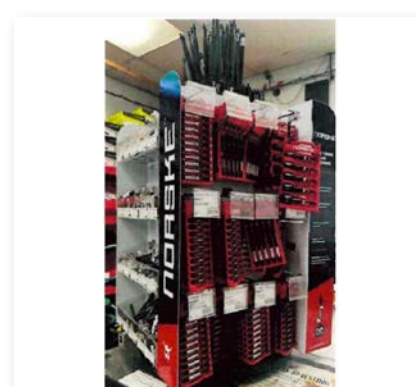
## ALL SUN FROG PRODUCTS

Wood Cleaners, Renewers, Sealers, Finishes, Stains and more  
*Clear, Maghony, Redwood*

# \$21<sup>59</sup>-\$228<sup>79</sup>

Reg. \$26<sup>99</sup>-\$285<sup>99</sup>

## HARDWARE



# 20% OFF

## NORSKE TOOLS

Impact Torsion Screw Driver Bit Sets, Hex Shank Titanium  
Coated Drill Bits, Ultra-Thin Kerf Saw Blades, and more

# \$1<sup>19</sup>-\$27<sup>19</sup>

Reg. \$24<sup>99</sup>-\$31<sup>99</sup>

775 Redwood Hwy • Mill Valley, CA 94941

[goodmanbuildingsupply.net](http://goodmanbuildingsupply.net) • 415-388-6233

Store Hours: Monday-Friday 6:45am - 6:00pm • Saturday 7:15am - 6:00pm • Sunday 8:00am - 6:00pm  
All items are subject to stock on hand. We reserve the right to correct printed errors. Illustrations may vary from actual merchandise.



**MARCH/APRIL 2025**

Prices good from March 1st-April 30th, 2025

### PROTECT YOUR HOME



**OVER & OUT**  
Bulbhead Fire Blanket  
1-Pack  
SKU# 6080994

**\$21<sup>99</sup>**



**FIRECOAT**  
Interior Paint  
*White*  
Low Sheen Water-Based Primer

1 Gallon  
SKU# 1037133

**\$69<sup>99</sup>**

2.5 Gallon  
SKU# 1035223

**\$169<sup>99</sup>**



**FIRECOAT**  
Exterior Paint  
*Gray*  
Low Sheen Water-Based Primer

1 Gallon  
SKU# 1035209

**\$79<sup>99</sup>**

2.5 Gallon  
SKU# 1035208

**\$179<sup>99</sup>**



**LITTLE FIREFIGHTER**  
Automatic Seismic Gas  
Shut-off Valve

4 feet Legacy Bronze  
MODEL#: 1ERSV  
SKU# 456167

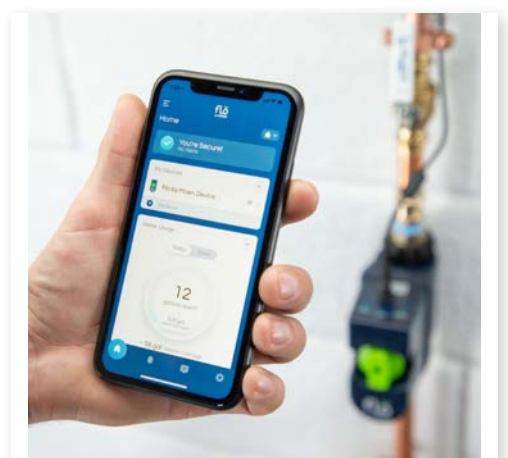
**\$162<sup>99</sup>**



**MOEN**  
Flo Smart Water Monitor  
and Shutoff

3/4 Inch  
SKU# 440061

**\$544<sup>99</sup>**



1-Inch  
SKU# 440062

**\$690<sup>99</sup>**



# GOODMAN BUILDING SUPPLY

**MARCH/APRIL 2025**

Prices good from March 1st-April 30th, 2025

## PLUMBING



**HUNTINGTON BRASS**  
Single Handle  
Drinking Faucet  
*Stain Nickel*  
MODEL# K9284729  
SKU# 400321

**\$55<sup>19</sup>**  
Reg. \$68<sup>99</sup>



**HUNTINGTON BRASS**  
Drinking Faucet  
*Chrome Finish*  
MODEL#K9284701  
SKU# 400319

**\$49<sup>59</sup>**  
Reg. \$61<sup>39</sup>



**20% OFF**  
**MODA**  
Shower Curtains  
*8 inch Bronze*  
SKU# 400403-400518

**\$10<sup>39</sup>-\$32<sup>79</sup>**  
Reg. \$12<sup>99</sup>-\$40<sup>99</sup>

## LUMBER / BUILDING MATERIALS

**\*REGULAR PRICES ON DELIVERIES\***



**QUIKRETE®**  
Concrete Mix  
Ready-to-Use  
  
**60lb.**

SKU# CM60 DELIVERY  
**\$5<sup>69</sup>** SKU# CM60D  
Reg. \$5<sup>99</sup> **\$6<sup>99</sup>**



**GMC**  
15RF Standing Roofing Felt  
  
**400sq.ft.**  
SKU# 15LBF

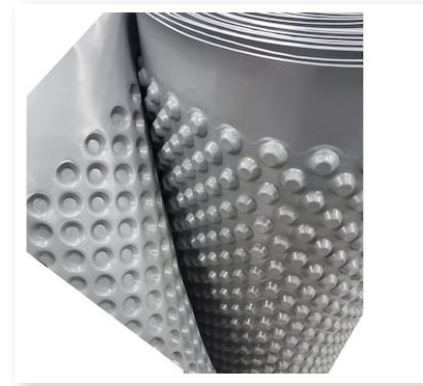
**\$38<sup>99</sup>**  
Reg. \$44<sup>99</sup>



**DF SHINGE**  
Cedar Shingles

**#1/24" / One Bundle**  
SKU# CS18

**\$99<sup>99</sup>**  
Reg. \$116<sup>99</sup>



**DELTA® DRAIN**  
Drainage Composite

**48"x50'**  
SKU# DB4850

**\$159<sup>99</sup>**  
Reg. \$185<sup>99</sup>



# GOODMAN BUILDING SUPPLY

**MARCH/APRIL 2025**

Prices good from March 1st-April 30th, 2025

## ELECTRICAL



**SATCO**  
LED T9 Circline Tube  
3000K, 4000K, 6500K  
**8-inch/G10/4 Pin**  
MODEL# FCTPLEDCIRCCTDMA-B  
SKU# 355283

**\$17<sup>59</sup>**  
Reg. **\$21<sup>99</sup>**



**SATCO®**  
LED Circline Tube Light  
3000K, 4000K, 6500K  
**12-inch/G10Q Base**  
MODEL# FC12T9LEDCIRCCTDMA-B+  
SKU# 355282

**\$20<sup>79</sup>**  
Reg. **\$25<sup>99</sup>**



**CTL**  
LED Retrofit Plug & PW/W  
**48'/15 Watt/3000K WW**  
MODEL#LB48T8XnP-830  
SKU# 356107

**\$7<sup>99</sup>**  
Reg. **\$9<sup>99</sup>**



**CTL**  
LED Tube Saplug and Play CW  
**4 Watt/40000CW**  
MODEL#LB12T5APNP840  
SKU# 352043

**\$10<sup>39</sup>**  
Reg. **\$12<sup>99</sup>**